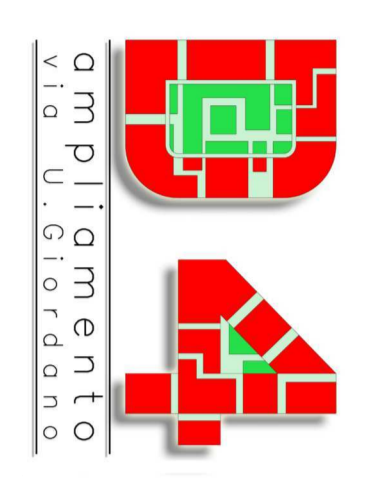


Regione Piemonte
COMUNE DI ALESSANDRIA
Provincia di Alessandria



Piano esecutivo convenzionato area urbana Cristo (AL) Progetto Urbanistico

OGGETTO INVOCA:
TAVOLA PLANIMERIA PUNTI DI RIPRESA
E DOCUMENTAZIONE FOTOGRAFICA

PR. PRE.	ALESSANDRIA	TAVOLA N.	SCALA	DATA INVIATA
1	1	1	1/2000	AGOS. 20/07/2018

IL PROGETTISTA:
Dott. Arch. Sergio CAMILLI - n.485 Ordine Architetti Alessandria
Gabriella Guerici - Alessandria

I PROPRIETARI:
D. IMMOBILIARE S.R.L.
Sergio RIGA s.p.a.
DIPYMACCSINO Maria Vittoria

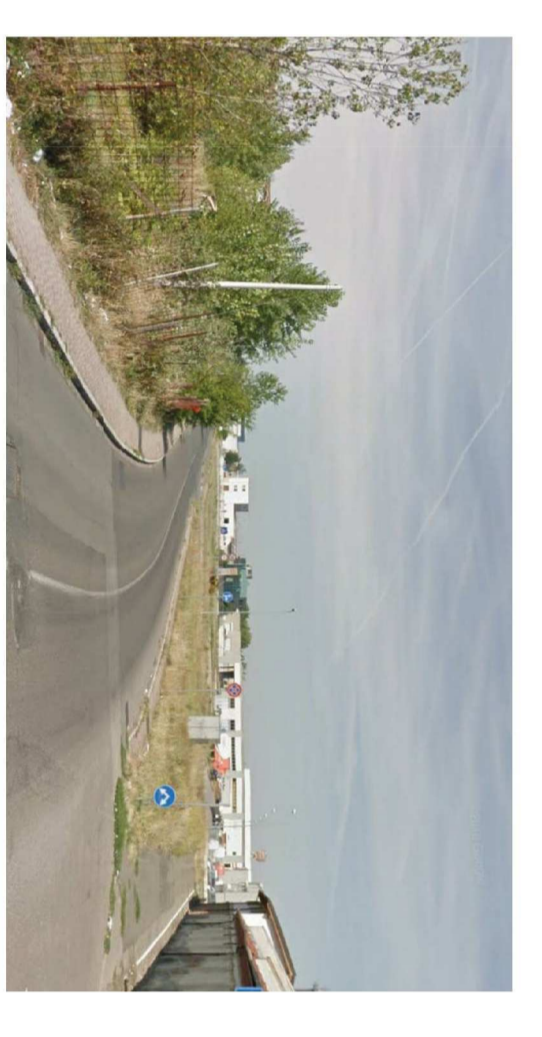


FOTO 1

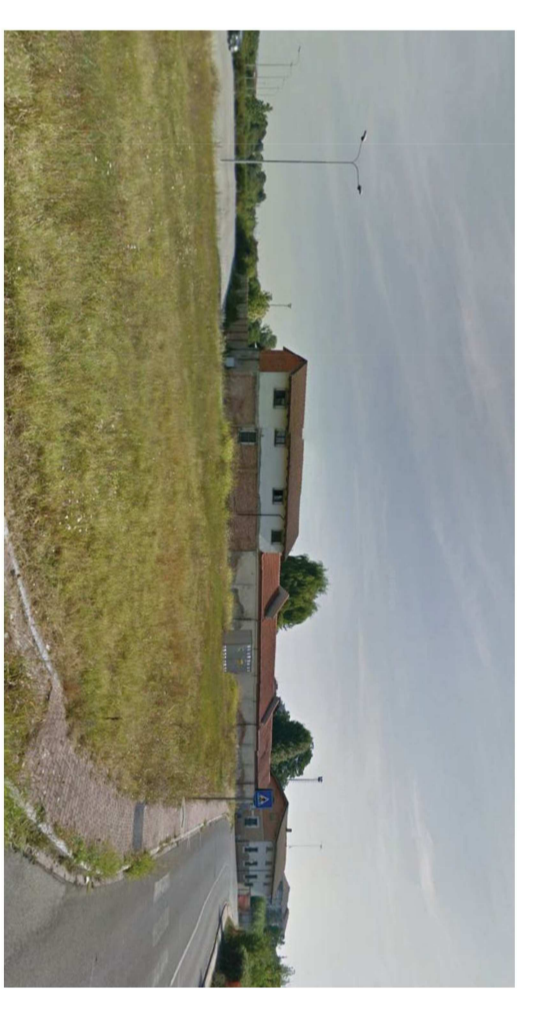


FOTO 2

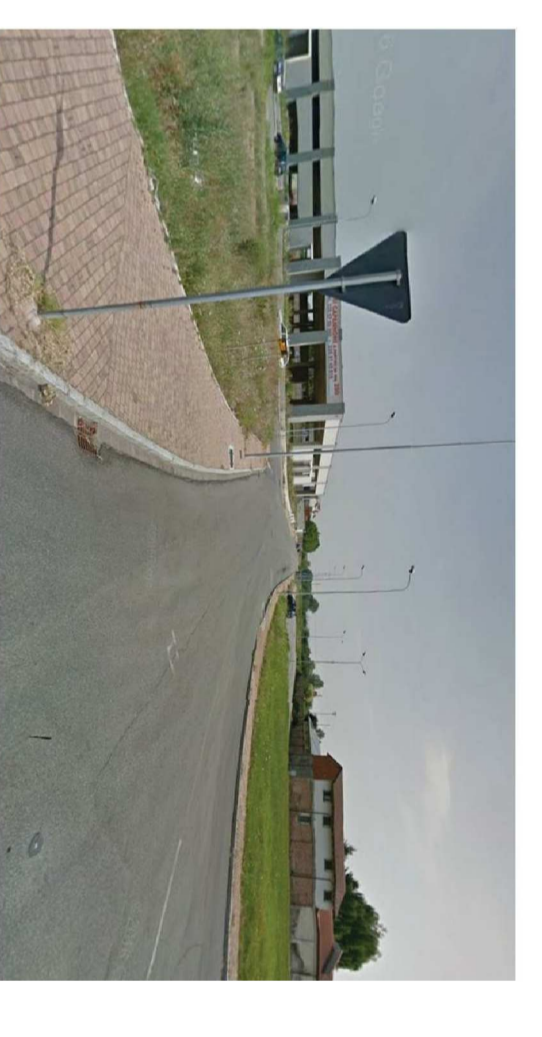


FOTO 3

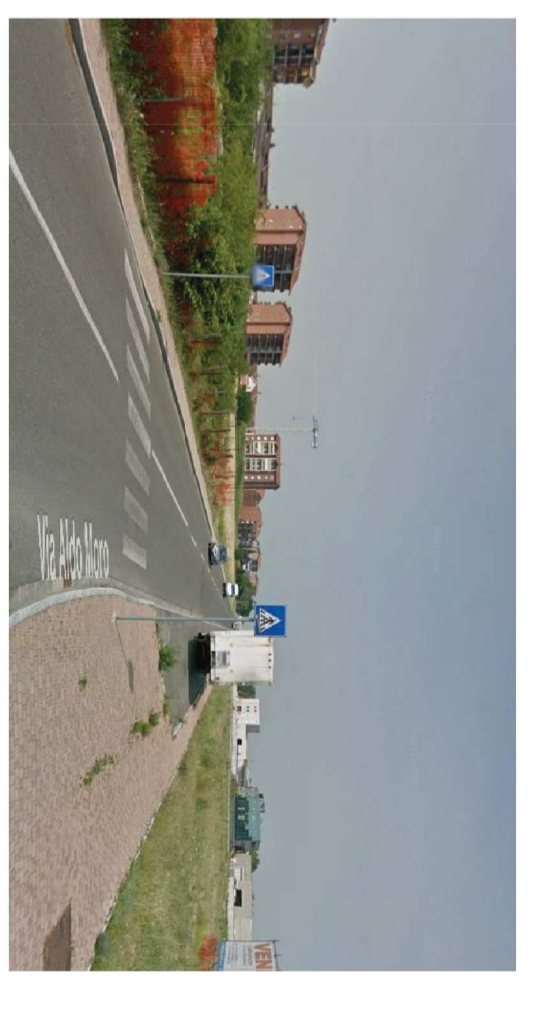


FOTO 4

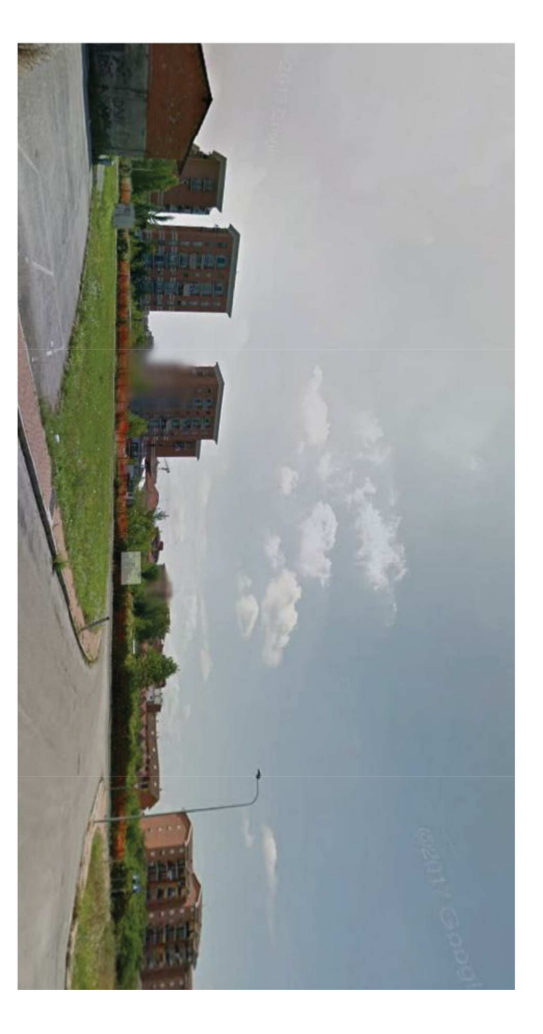
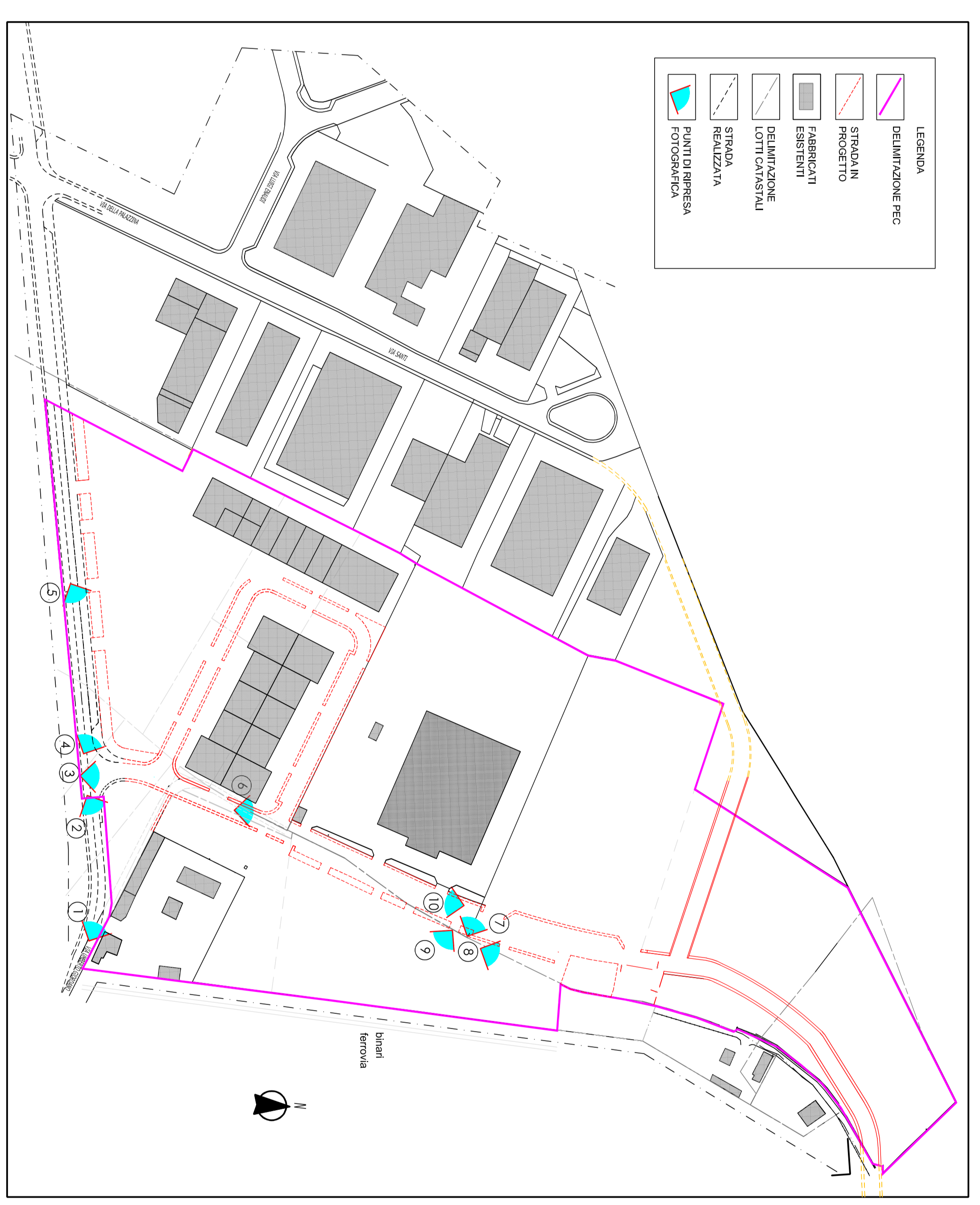


FOTO 5

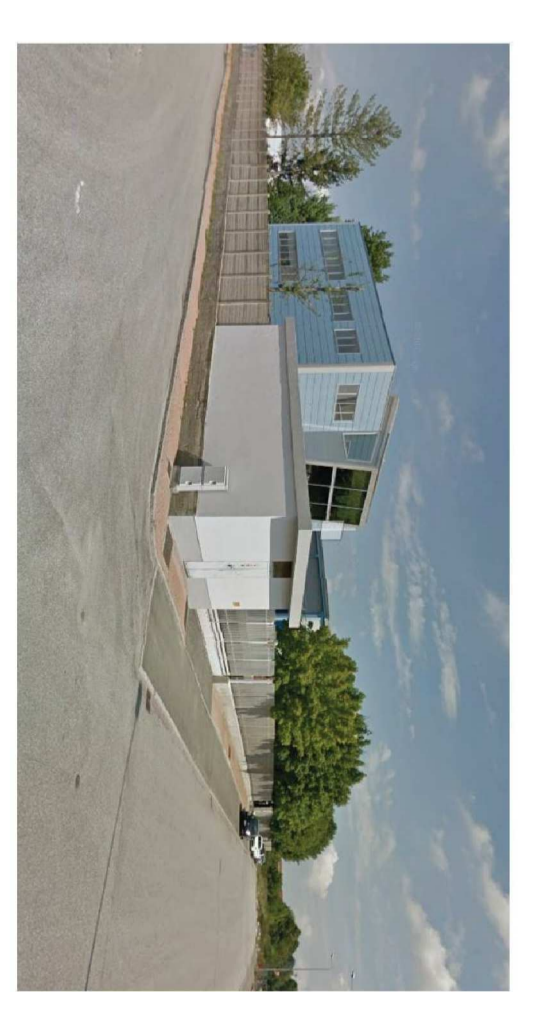


FOTO 6

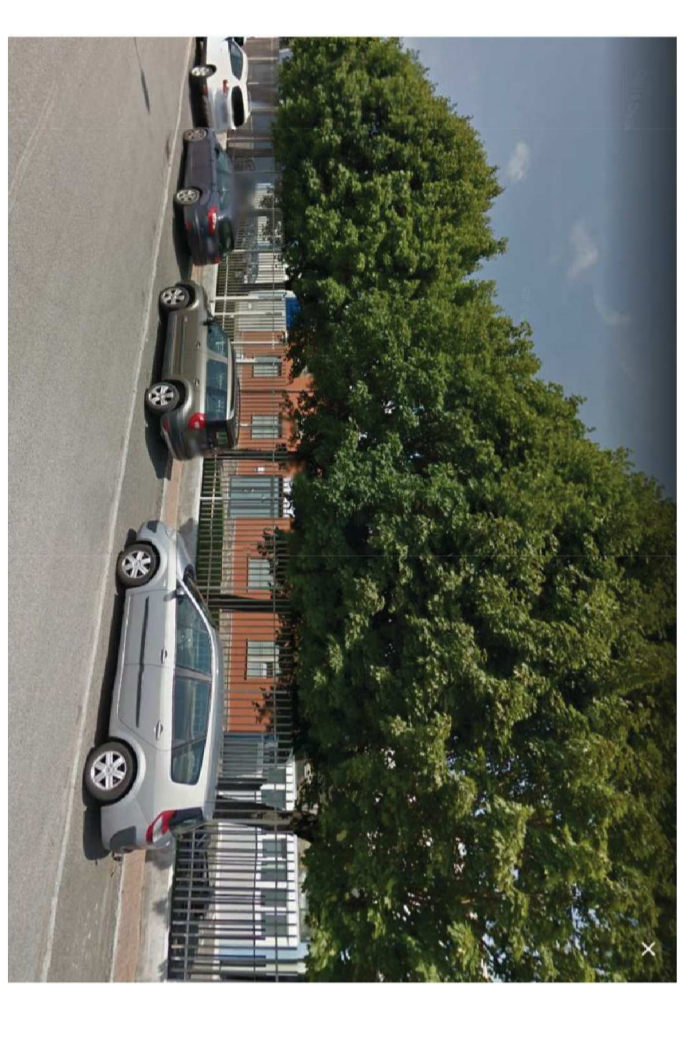


FOTO 9

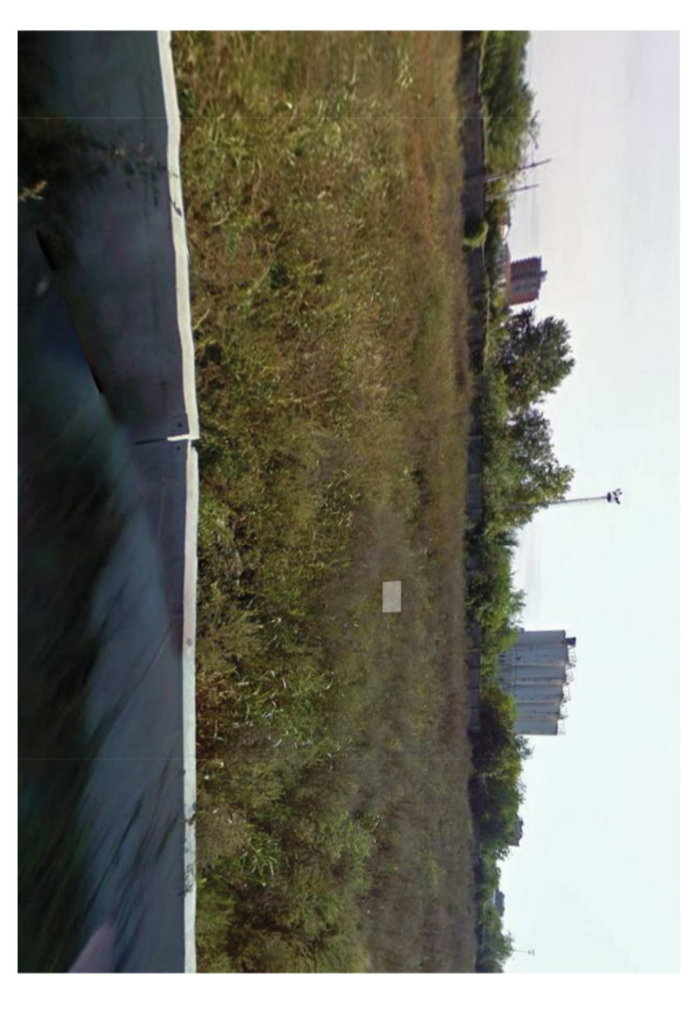


FOTO 8

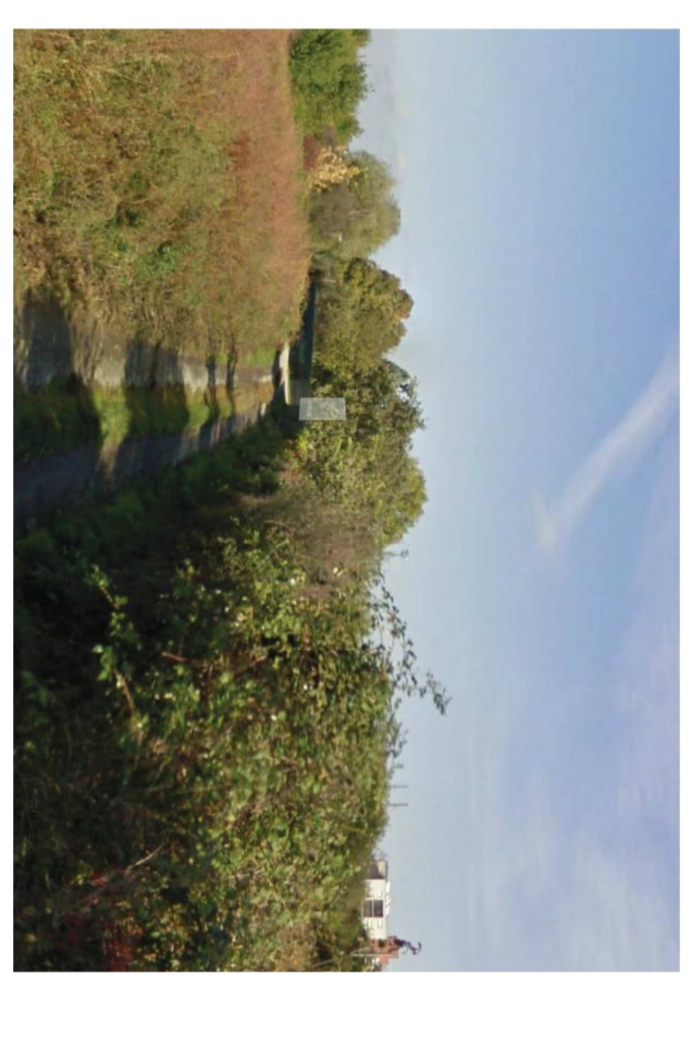


FOTO 7

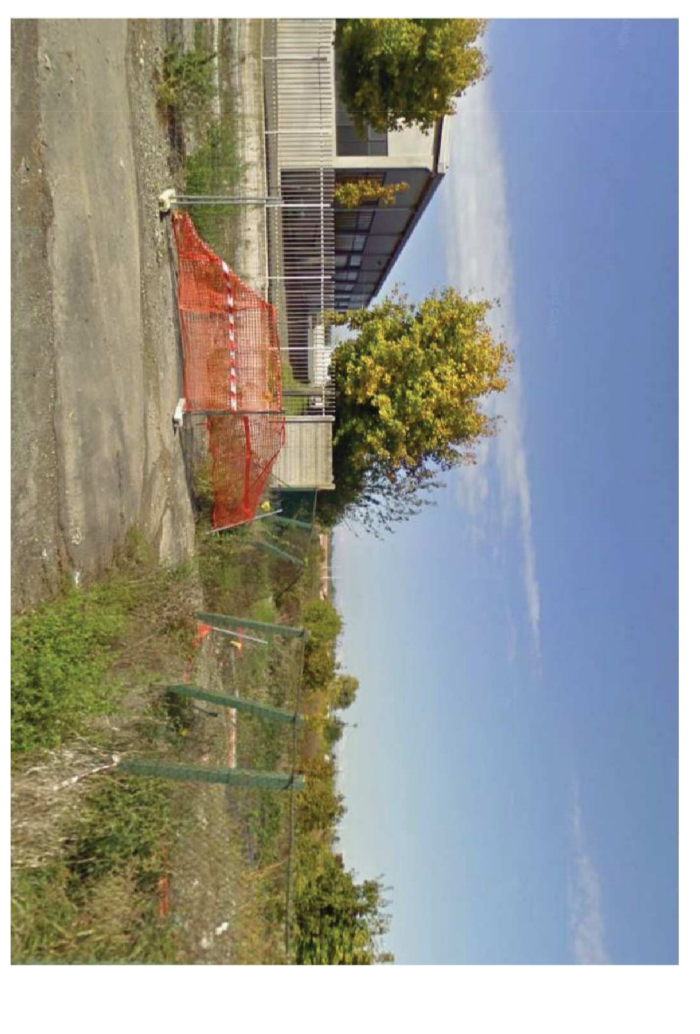


FOTO 10